

# Chamlide TC

Incubator system for various types of chambers

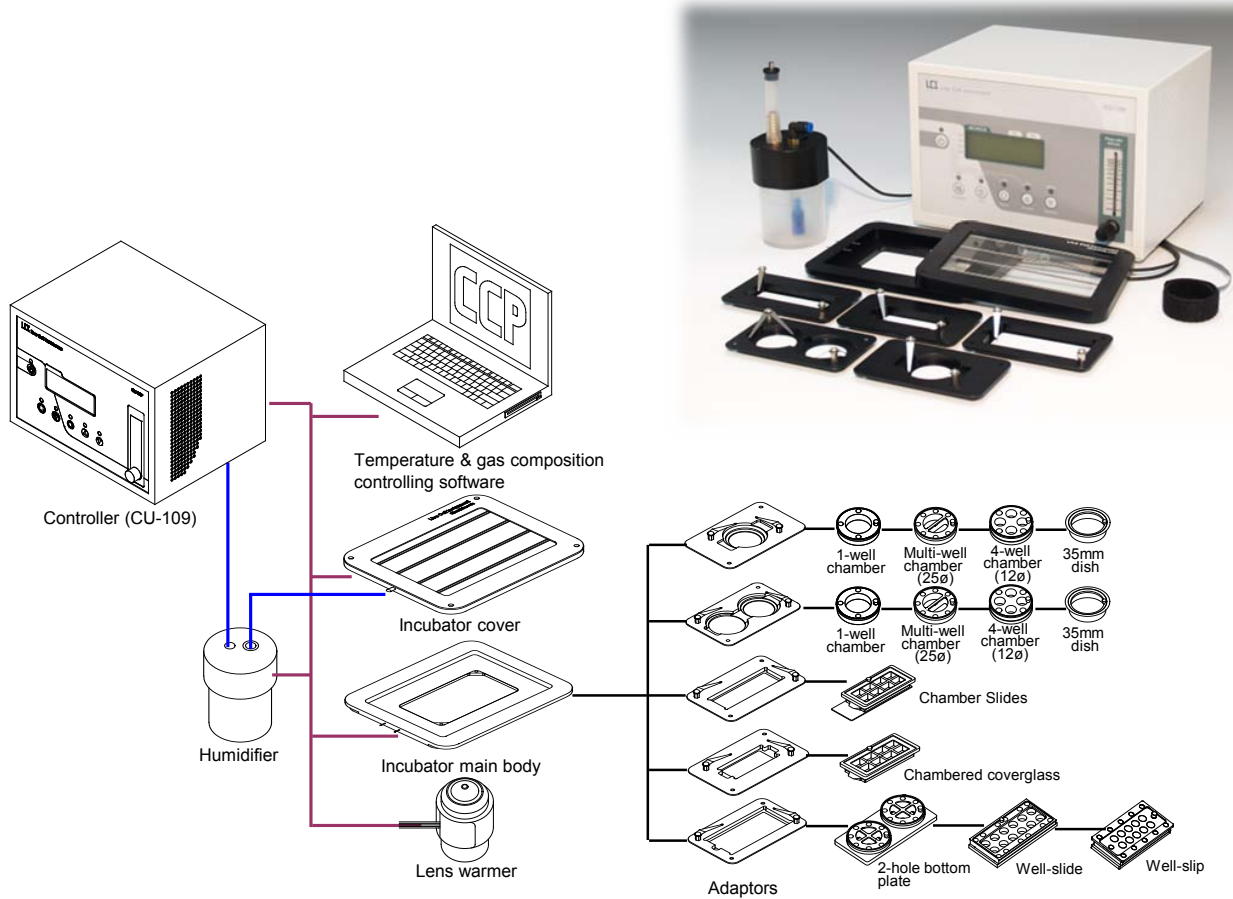


- Chamlide TC can be used on almost any microscope stage (Depending on the stage type, the Chamlide TC requires an incubator holder). The Chamlide TC was originally designed to fit stages with the universal mounting frame K such as Zeiss or Leica standard stages or most XY-motorized stages.
- Chamlide TC can accept both various Chamlide magnetic chambers and commercial culture dishes using 5 types of adaptors.
- Chamlide TC includes special glass covers for disposable culture wares to maintain humidity and provide excellent transmission for imaging. (For Lab-Tek chambered coverglass, Lab-Tek chamber slide, and 35mm plastic culture dish)
- The controller (CU-109) controls temperatures of the incubator main body, incubator cover, humidifier, and lens warmer, as well as adjust the flow rate of the mixed CO<sub>2</sub> gas by using the flow meter (less than 100 ml/min).
- Chamlide TC has two types of incubator covers : One has the heater lines, and the other one is coated heating element (without heater lines).
- The FC-5 or FC-7 can provide optimum mixed gas to all incubator systems such as Chamlide TC, WP, and IC.
- Chamlide TC is available with in/out ports for perfusion or injection of liquids or drugs without having to open the incubator cover(using CM-B-PA, CM-B-PB).
- It is possible to control the temperature and gas concentration, program temperature and gas concentration gradients, and record the temperature and gas concentration over time using CCP ver 3.8 software or MetaMorph software.

## ■ Adaptors available

- TC adaptor for 35 mm dish type chamber or dish  
: Commercial 35mm culture dishes (consumable) or 35mm dish type Chamlide magnetic chambers (re-useable)
- TC adaptor for Chamber Slide  
: Nunc Lab-Tek™ II Chamber Slide (consumable, slide glass bottom)
- TC adaptor for Chambered coverglass  
: Nunc Lab-Tek™ II Chambered Coverglass (consumable, coverslip bottom)
- TC adaptor for 2-hole type Chamlide MB or Well-Slide/ Well-slip  
: Chamlide MB(Chamlide magnetic chambers), re-useable, coverslip bottom), Well-Slide (re-useable, slide glass bottom), or Well-Slip (re-useable, coverslip bottom)



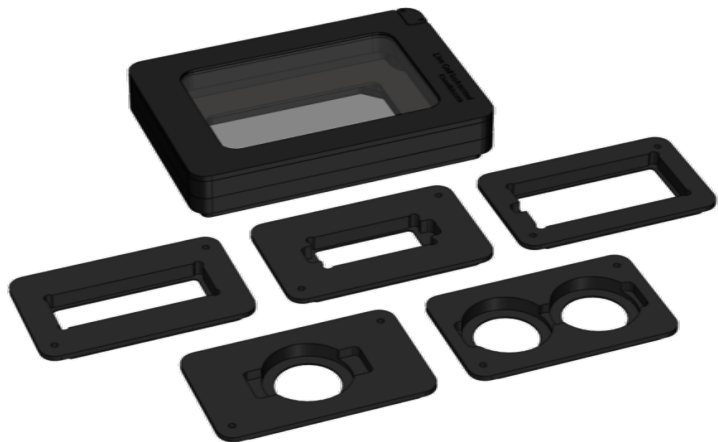


### Specifications

Temperature range	Ambient +3°C ~ 45°C
Recommended 5% CO <sub>2</sub> / 95% Air flow rate	40~50 ml/ min
Incubator physical dimension (mm)	Cover 164.9 (W) x 134 (D) x 11 (H) Main body 160.0 (W) x 130 (D) x 14 (H) (Insert size 160 (W) x 110 (D))
Heating method	Adaptor 110.0 (W) x 62 (D) x 7 (H) Cover built-in heater glass Main body thin layer heater Humidifier cartridge heater Lens warmer thin layer heater
Humidifier bottle volume for humidity	Maximum 100 ml
Sensor	Thermo-couple
Incubator material	Black anodized aluminum alloy

Model No.	Product
TC-L-10	Chamlide TC
TC-L-10P	Chamlide TC for Prior XY auto-stage

## Chamlide TC-A (Chamlide TC for ASI or LUDL piezo z-stage)



- Chamlide TC-A is for use with an Applied Scientific Instrumentation (ASI) or LUDL Electronic stage with piezo Z top plate.
- The exterior dimensions of the incubator are the same as universal mounting frame K.
- The weight of the incubator body including the adaptor and chamber(s) does not exceed 500g.
- Other functions and features are the same as the standard type Chamlide TC.

Incubator physical dimension (mm)	159.5mm (W) x 109.5 (D) x 28.5 (H)
Incubator material	Black acetal component, black anodized aluminum alloy

## Chamlide TC-L (Chamlide TC for piezo z-stage, Well plate size)



- Chamlide TC-L is for the piezo Z-stage with the well plate size insert.
- The exterior dimensions of the incubator are the same as those of commercial well plates.
- The weight of the incubator body including the adaptor and chamber(s) does not exceed 500g.
- Other functions and features are the same as the standard type Chamlide TC.

Incubator physical dimension (mm)	127.5mm (W) x 85.5 (D) x 23.0 (H)
Incubator material	Black acetal component, black anodized aluminum alloy

## Chamlide TC-P (Chamlide TC for PRIOR or Leica piezo z-stage)



- Chamlide TC-P is for use with a PRIOR Scientific or Leica piezo Z top plate.
- This incubator can use only both a 35mm dish type magnetic chamber (or dish) and a chambered coverglass. (There are two kinds of TC adaptors.)
- The weight of the incubator body including a chamber does not exceed 500g.
- Other functions and features are the same as the standard type Chamlide TC.

Incubator physical dimension (mm)	92.5mm (W) x 65(D) x 23 (H)
Incubator material	Black acetal component, black anodized aluminum alloy

- Customized Chamlide TC of any other sizes or shapes are available upon request.

<b>Model No.</b>	<b>Product</b>
TC-L-20	Chamlide TC-A (Chamlide TC for ASI or LUDL piezo z-stage)
TC-L-30	Chamlide TC-L (Chamlide TC for piezo z-stage, Well plate size)
TC-L-40	Chamlide TC-P (Chamlide TC for PRIOR or Leica piezo z-stage)